

A

B

C

D

E

F

1

1

2

2

3

3

4

4

5

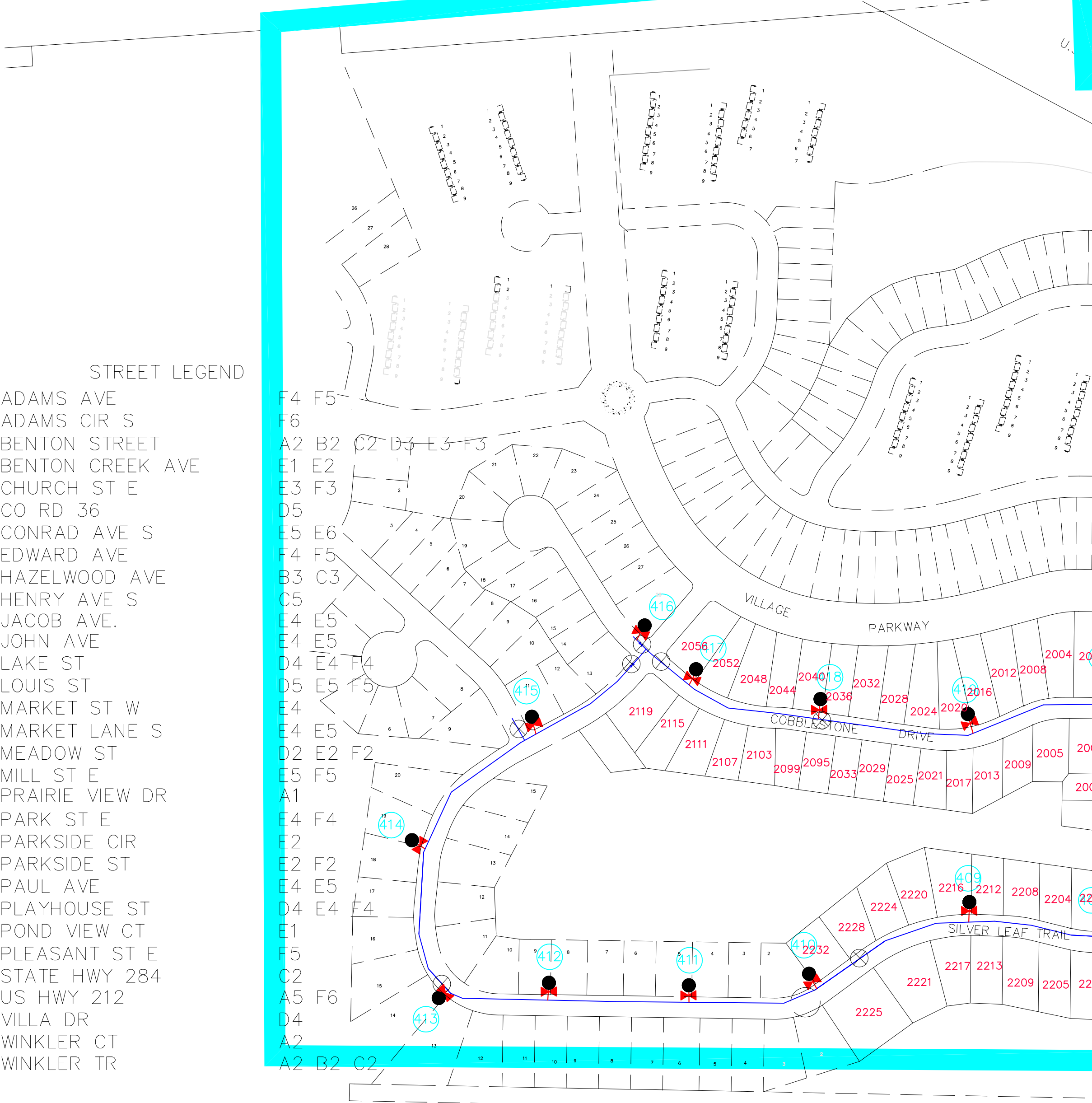
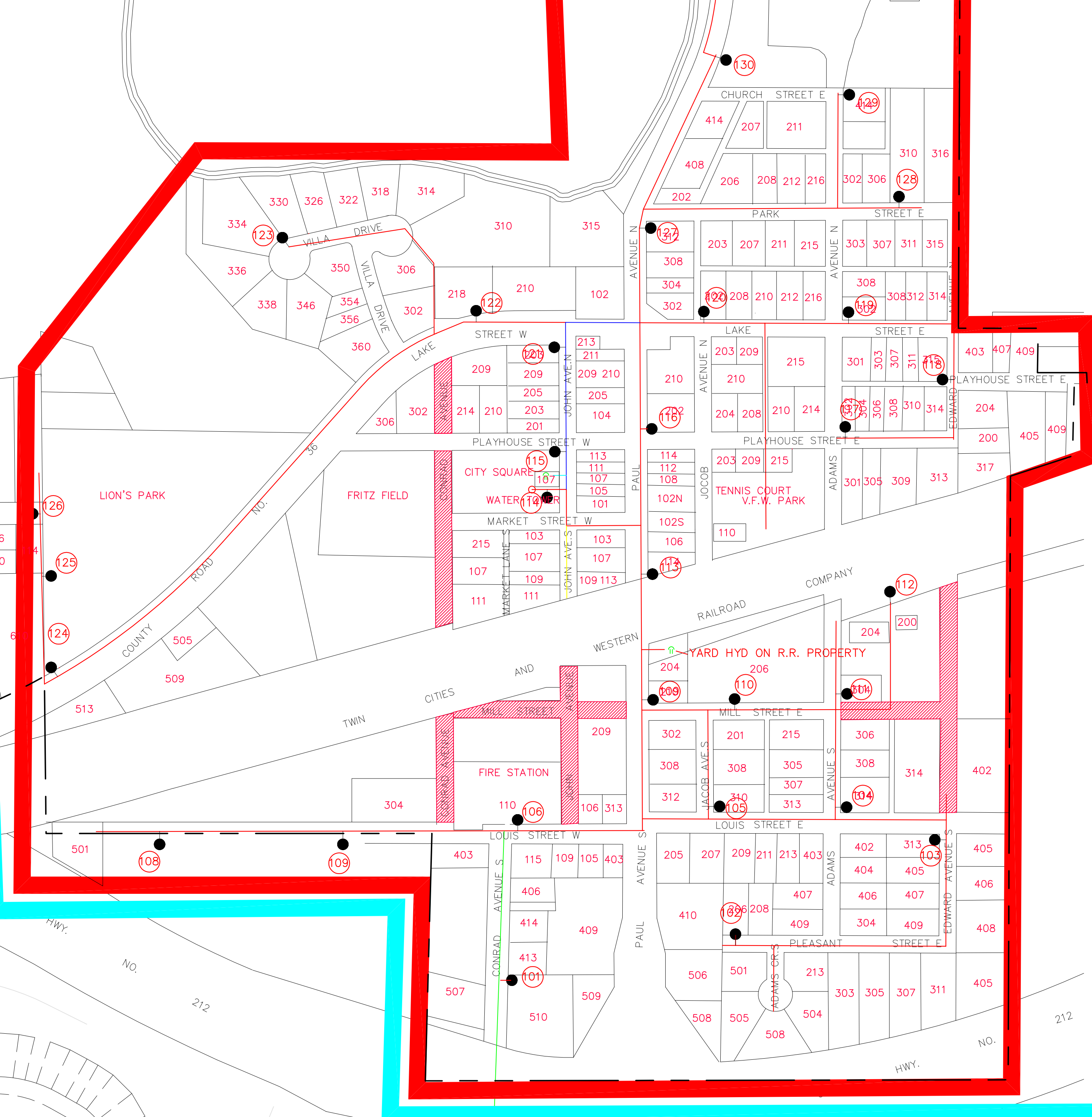
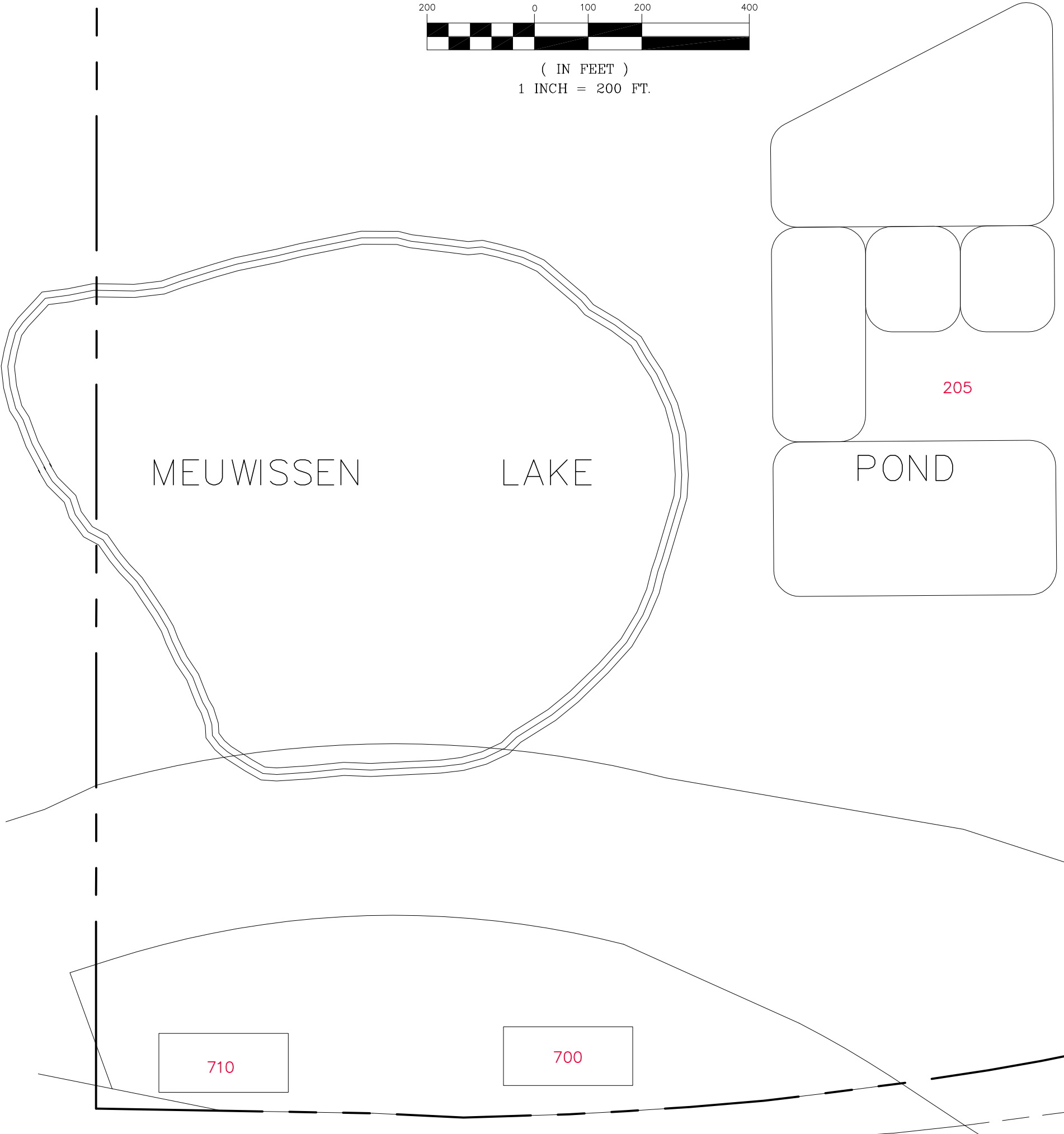
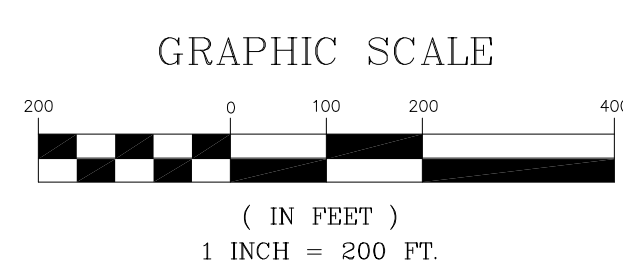
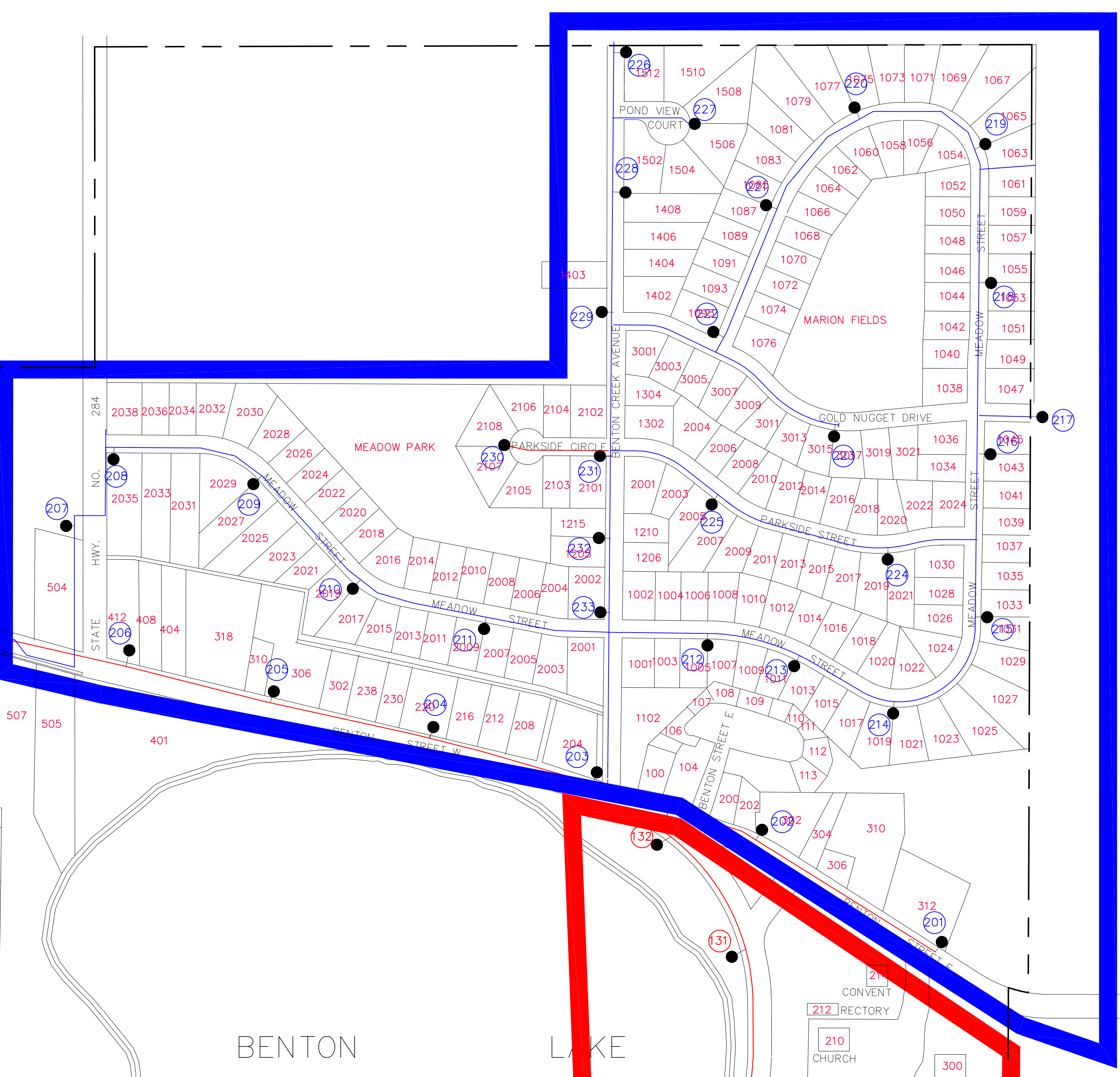
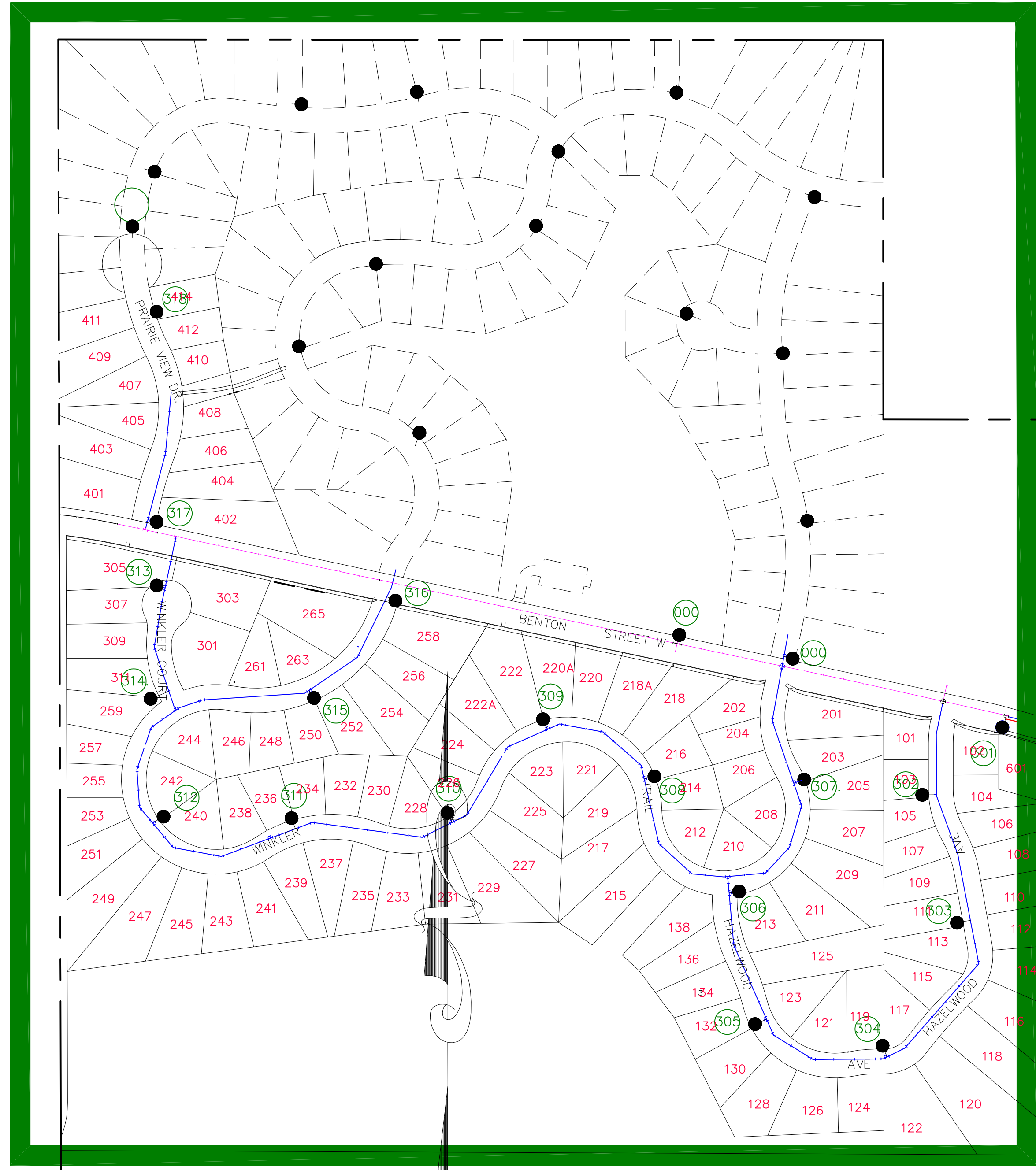
5

6

6

7

7



- STREET LEGEND**
- 4 F5 ADAMS AVE
  - 4 F6 ADAMS CIR S
  - A2 B2 BENTON STREET
  - C1 E2 BENTON CREEK AVE
  - E3 F3 CHURCH ST E
  - 05 CO RD 36
  - E5 E6 CONRAD AVE S
  - 4 F5 EDWARD AVE
  - B3 C3 HAZELWOOD AVE
  - C5 HENRY AVE S
  - 4 E5 JACOB AVE
  - 4 E5 JOHN AVE
  - 04 E4 LAKE ST
  - 05 E5 LOUIS ST
  - 04 E5 MARKET ST W
  - 02 E2 MARKET LANE S
  - 04 E5 MEADOW ST
  - 01 E1 MILL ST E
  - 04 F1 PRAIRIE VIEW DR
  - 04 F4 PARK ST E
  - 02 E2 PARKSIDE CIR
  - 02 F2 PARKSIDE ST
  - 04 E5 PAUL AVE
  - 04 E4 PLAYHOUSE ST
  - 01 E1 POND VIEW CT
  - 05 F5 PLEASANT ST E
  - 02 E2 STATE HWY 284
  - 05 F6 US HWY 212
  - 04 E4 VILLA DR
  - 02 W2 WINKLER CT
  - 04 E4 WINKLER TR

LEGEND

- 2" FACILITY
  - 4" FACILITY
  - 6" FACILITY
  - 8" FACILITY
  - 10" FACILITY
  - 12" FACILITY
  - WELL
  - TOWER
  - HYDRANT
  - GATE VALVE
  - HYDRANT GATE VALVE
  - WATER DISTRICT # 1
  - WATER DISTRICT # 2
  - WATER DISTRICT # 3
- | FACILITY         | PUMPING RATE (GPM) |
|------------------|--------------------|
| WELL NO. 1       | 117                |
| WELL NO. 2       | 180                |
| STORAGE FACILITY | CAPACITY (GAL)     |
| TOWER            | 150,000            |

**CITY OF COLOGNE**  
**WATERMAIN MAP**

**BOLTON & MENK, INC.**  
 CONSULTING ENGINEERS & SURVEYORS

MANKATO, MN FAIRMONT, MN SLEEPY EYE, MN WILLMAR, MN  
 BURNSVILLE, MN CHASKA, MN AMES, IA LIBERTY, MO

MARCH, 2006